



**TORRANCE MEMORIAL**  
A CEDARS-SINAI AFFILIATE

*Donald & Priscilla* **Hunt Cancer Center**

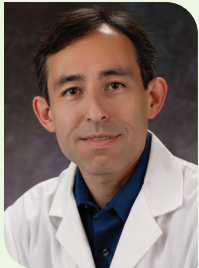


**TORRANCE MEMORIAL**  
A CEDARS-SINAI AFFILIATE

Hunt Cancer  
Institute

# Physician Focus

# Hunt Cancer Institute (HCI)



## Message from the director

As director of the Hunt Cancer Institute (HCI) at Torrance Memorial Medical Center, I am proud to be working alongside HCI's outstanding physicians and staff during an exciting and

transformational time for cancer treatment.

A Center of Excellence for cancer care, HCI treats an extensive range of common and rare cancers, including some of the most challenging diagnoses. Our multidisciplinary team includes oncologists, surgeons, pathologists, geneticists, radiation oncologists, and nurse navigators – all focused on providing patients with seamless coordinated care from diagnosis through treatment and into survivorship.

Our collaboration with Cedars-Sinai continues to expand and evolve, allowing us to provide our patients in the South Bay with a level of cancer care available only at the nation's most advanced academic medical centers. This partnership, along with our involvement with other research networks, means our patients have access to some of the most promising clinical trials years before they become available to the public.

We are proud that our one-year-old 40,000-square-foot Hunt Cancer Center, located on the Torrance Memorial campus, provides complete cancer services in a patient-centered environment. Our investment in this new space, and in state-of-the-art diagnostic and treatment technology, means we can meet all the needs of our cancer patients right here in the South Bay – close to their home and the support of their loved ones.

Our goal for this newsletter is to keep you informed regarding HCI key capabilities. Going forward as we continue the series, we will highlight subspecialties and their impact on today's approach to treating cancer.

Meanwhile, I know I speak for the entire HCI staff when I say I am grateful to be part of a team that is at the forefront of a changing field where personalized medicine is improving outcomes, reducing and offering cancer patients new hope.

Best regards,

Hugo Hool, MD

Medical Director of the Hunt Cancer Institute

## Oncology Care Model (OCM) Data

This data is provided by the Center for Medicare & Medicaid Innovation. Torrance Memorial Medical Center was one of 138 practitioners to be selected from across the US to participate in the OCM, whose goal is to provide higher quality, more highly coordinated oncology care at the same or lower cost to Medicare.

Data Measurement*	Torrance Memorial Q17 Score/Percentile
Patient satisfaction	<b>8.45/75th percentile</b>
Hospital admissions and short-term acute care	<b>Better than 30% US average</b>
Readmission rates	<b>43% lower than US average</b>
ED visits (no admit rates)	<b>35% lower than US average</b>
Overall mortality rates	<b>37% lower than US average of eligible cancer types</b>
Mortality rates for breast cancer	<b>52% lower than US average</b>
Mortality rates for lung cancer	<b>33% lower than US average</b>

\*Source: Q17 OCM Practice Feedback Report for July-September 2020

# By the Numbers

## 25+ Subspecialties and services available to patients at the Hunt Cancer Institute:

- Imaging and radiology
- Radiation oncology
- Dedicated oncology inpatient unit
- Cancer Rehabilitation Program
- Research and clinical trials
- State-of-the-art 32-bay Infusion Center
- Pathology
- Multidisciplinary Tumor Boards
- Genetics Program
- Psychosocial services
- Palliative Care and Pain Management Programs
- Home Health and Hospice
- Medical nutrition therapy
- Nurse navigators
- Integrative oncology
- Cancer support programs
- Image Enhancement Center
- Early detection and prevention
- Survivorship and community outreach events

**75+**

Types of cancer treated at Hunt Cancer Institute

**40+**

The number of active clinical trials available to patients at Hunt Cancer Institute

**40,000** square feet

Size of the new state-of-the-art Hunt Cancer Center located on the Torrance Memorial Medical Center campus

**32**

Patient bays in the Hunt Cancer Institute Outpatient Infusion Center

## The Polak Breast Diagnostic Center\*

**34,303** – Annual screening exam volume

**1,657** – Annual procedure exam volume

**6,658** – Annual diagnostic exam volume

**4** – Breast screening locations in the South Bay

\*Numbers represent average of 2018-2019 volumes

# Expertise

## Multidisciplinary Tumor Boards

Hunt Cancer Institute specialists participate in multidisciplinary tumor boards, including tumor boards specific to breast, gastrointestinal, lung and brain tumors. Board participants include pathologists, medical oncologists, radiation oncologists, surgical oncologists, geneticists, and more. Cancer experts from Torrance Memorial and Cedars-Sinai hold meetings for specific cancer types to discuss patient care and ensure everyone is up-to-date on the latest clinical trials, guidelines, treatments and technology.

## Cedars-Sinai partnership

Torrance Memorial's partnership with Cedars-Sinai continues to evolve and grow, providing patients with access to the expertise of renowned cancer leaders from one of the nation's premier academic medical centers. Now in its fourth year, this alliance continues to bring expertise, new technologies, medical research, clinical trials and innovative treatments to the South Bay.

## Research and clinical trials

The Hunt Cancer Institute is currently offering clinical trials for various common and more rare cancer types including pancreatic, lung, lymphoma and breast cancer. Hunt Cancer Center sources some of the most promising clinical trials through partnerships with Cedars-Sinai, UCLA TRIO-US Network, and pharmaceutical companies. Examples of current trials include:

- Liquid biopsy clinical trial for asymptomatic patients receiving screening mammograms.
- Open study for lymphoma comparing outcomes of oral medications versus traditional chemotherapy.
- TAPUR™ study for people with later-stage cancer, focused on whether specific targeted therapies can benefit more patients and lead to more personalized therapies.
- neoMONARCH trial testing a novel CDK inhibitor, abemaciclib, to be used before surgery in breast cancer.
- NATALEE, a post-operative breast cancer trial using the CDK inhibitor ribociclib.
- COMET trial for patients with low-risk DCIS to determine effectiveness of guideline concordant care (GCC) compared with active surveillance (AS).

## High-Risk Breast Cancer Program

Women found to have atypical ductal and/or lobular hyperplasia lesions on biopsy have access to a specialized program that includes genetic counseling and education, routine screenings, and referral for follow up to a surgeon and/or medical oncologist for discussion of potential risk-reduction treatment options and chemoprevention. Each patient is followed by a nurse navigator through the process.

## Lung Cancer Program

Recognized by *U.S. News & World Report* as a High Performing Hospital for lung cancer surgery, HCI offers a comprehensive program for lung cancer patients including low-dose lung cancer screenings, highly accurate and targeted radiation therapy, minimally invasive surgical techniques and access to advanced clinical trials.

## Neuro-oncology and Neurosurgery Program

Brain tumor patients receive personalized care based upon their specific tumor type including neurosurgery, neuroradiology, neuro-oncology or a combination. The neuro-oncology team includes the only neuro-oncologist practicing in the South Bay and offers the most recent breakthrough opportunities in precision medicine and immunotherapy.

## Nurse Navigator Program

An HCI nurse navigator works with each cancer patient, from initial diagnosis through treatment, coordinating tests and appointments, explaining procedures, monitoring the treatment plan and providing encouragement and support. Our nurse navigators also help with practical issues such as transportation, insurance and financial concerns.

## Genetics Program

HCI patients have access to a geneticist who can help them understand their genetic test results and discuss risk-reducing and preventative options. Services include coordination of testing, family testing and counseling, interpretation of results and personalized cancer screening planning.

# Technology

## State-of-the-art imaging

Highly skilled nurses, technologists, managers and support staff work with state-of-the-art technology to provide HCI patients with the wide range of diagnostic imaging services you would expect from a leading academic imaging facility.

## Outpatient Infusion Centers

Patients receive their chemotherapy in one of our two infusion centers. For more than 25 years, our high treatment volume consistently places us within the top four community practices in California, and our treatment numbers exceed many university cancer centers. All of our nurses are chemotherapy certified, and they take every step to ensure that our patients' treatment is accurate, safe and comfortable.

## Advanced breast cancer diagnostics

A Breast Imaging Center of Excellence, and the highest volume breast diagnostic center in the area, the Polak Breast Diagnostic Center offers a full range of imaging services including 3D mammography, breast ultrasound, breast MRI, ultrasound-guided breast biopsy, stereotactic breast biopsy and breast MRI biopsy.

## Brainlab

Brainlab equipment and software technology is used by Torrance Memorial neurosurgeons to plan and navigate all their neurosurgery procedures. The Brainsuite® iCT allows surgeons to see the area of the brain they're operating on with unparalleled precision.

## MarginProbe®

MarginProbe uses radio frequency electrical fields to evaluate tissue that has been removed during a lumpectomy procedure in order to identify any cancer that may be remaining on the surface of the tissue. If MarginProbe identifies cancer on the surface of the tissue, the surgeon will remove the additional tissue from the breast, eliminating the need for a second procedure. MarginProbe can be used for lumpectomy for all types of breast cancers, including invasive ductal carcinoma, invasive lobular carcinoma and ductal carcinoma in situ (DCIS).

## da Vinci Xi® Robotic Surgery System

The most versatile of the da Vinci robotic systems, the Xi allows for the conversion of advanced open surgery to minimally invasive laparoscopic surgery. The reduction in incision size and tissue trauma results in quicker recoveries and shorter hospital stays. The da Vinci Xi system may be used for general, cardiac, colorectal, gynecologic, urologic, head and neck, and thoracic surgery.

## Photodynamic therapy (PDT)

PDT is a highly selective form of therapy that allows surgeons to specifically target cancer cells by using a photosensitizing agent and light, leaving the normal cells adjacent to the cancer cells uninjured. PDT can be used to treat cancers causing obstructions of the esophagus and the airways that can be reached with only an endoscopy.

## SpaceOAR™ Hydrogel

SpaceOAR (Spacing Organs at Risk) is a temporary gel placed between the prostate and rectum prior to radiation treatment for prostate cancer. The gel physically separates the prostate from the rectum so there is less unnecessary radiation exposure to the nearby rectum and fewer side effects.

## Radiation oncology

Radiation oncology at HCI offers patients the most progressive cancer imaging, computer-aided planning and targeted treatments available. The precise delivery of treatment limits the exposure of healthy tissue to radiation and reduces side effects. HCI radiation oncologists employ state-of-the-art stereotactic radiology technology including TrueBeam® technology and the Calypso® extracranial tracking system.

# Awards and Accolades



Hunt Cancer Institute is accredited as a Comprehensive Community Cancer Program by the American College of Surgeons Commission on Cancer (CoC).

The Polak Breast Diagnostic Center is recognized by the American College of Radiology (ACR) as a Breast Imaging Center of Excellence.



The Polak Breast Diagnostic Center is fully accredited by the American College of Surgeons and the National Accreditation Program for Breast Centers (NAPBC) and is held to the highest standards of care for patients with diseases of the breast.

*U.S. News & World Report* in most areas of care are based largely or entirely on objective measures such as risk-adjusted survival and readmission rates, volume, patient experience, patient safety and quality of nursing, among other care-related indicators.



Torrance Memorial has received re-designation for the prestigious Magnet Recognition Program® from the American Nurses Credentialing Center (ANCC). This designation recognizes excellence in nursing services.

Torrance Memorial Medical Center is one of 138 practitioners to be selected from across the US to participate in the OCM, with the goal of providing higher quality, more highly coordinated oncology care at the same or lower cost to Medicare.

